

PureAiro

# PUREAIRO DUAL X

## APPLICATION

The Dual X dehumidifier has super stable and durable dehumidification performance, and can work in (110-230) dual-voltage environment. New generation surface scratch resistance polyethylene shell 25% than the previous generation. The self-developed rotating shell design is easy to maintain and beyond imagination. Telescopic handles and rubber tires are stacked together for easy transportation. Under the condition of unchanged performance, the volume of the whole machine is 40% smaller. Simplified user controls include a large LCD display and APP control. It can control the dehumidifier at home anytime and anywhere, plus the built-in pump to pump water through the dehumidifier more intelligently.

Dual X dehumidifier passed the professional testing and feedback and had an amazing outcome. Now let's take a close look at specifications and features. Storm DP has an extremely high water-repellent capacity which makes the machine an authorized one for restoration needs. Humidity levels balanced of the year. The flexible installation makes the unit ideal for almost all applications. It is the best choice for all emergency after-flood restoration tasks for dampness removal and early prevention of mold growth. Its wide range of applications include Flood & Restoration, Carpet Cleaning, Laundries, Tradesmen, Garages, etc... or anywhere you need to extract moisture at a professional level.



PROFESSIONAL  
DEHUMIDIFIER >>>>



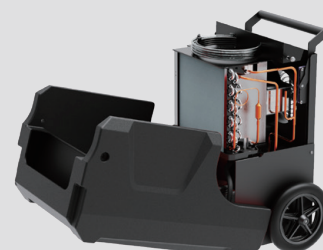
Dual-Voltage



Wi-Fi/APP Control



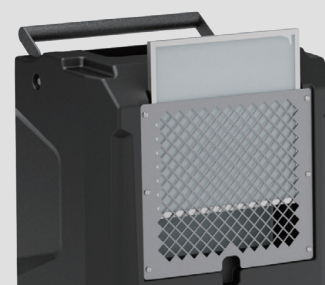
Big LCD Display



Easy access to  
all components



Cord and Hose Storage



Easy Filter Access

## WHY DEHUMIDIFY?

- Can effectively prevent household items, food, medicine, and books get moldy.
- Can effectively protect household appliances, computers, cameras and other instruments from moisture damage.
- It can effectively prevent the long-term humidity of the crawl space or basement from generating moisture in the wood of the house structure to cause rot and damage.
- Can effectively let the house stay away from pest infestation
- Can effectively avoid excessive humidity in a space where it's easy for mold, mildew, and fungus to thrive.

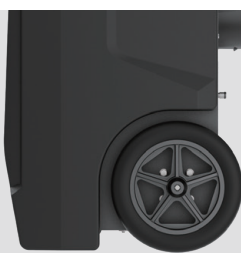
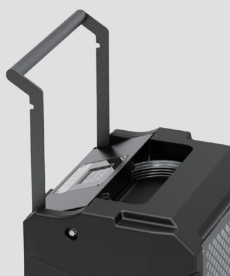


**PUREAIRO**  
**Dual X**

Superior  
Stacking



Sturdy Handle



Large Diameter  
Wheels

This is a very compact dehumidifier ever produced for drying restoration while it has a portable design for easy transport. Its stackable design not only saves flood restorer more space, but also allows more number of the machines to be transported to the destinations for after-flood restoration tasks.

As for the tough environment that flood disasters might have, Storm DP is designedly built with rugged rotomolded housing which is of high-quality industrial material. It is durable enough to withstand severe collision and corrosion found in water damage restoration and construction.

As the unique design compared with others, we provide a humidity sensor in bypass air design which makes the short-cycling go away for repairing the pump and main board quickly. Since customers can do it by themselves, service become easy. Pre-assembly makes the installation process simple, thereby reducing the overall installation and project cost.

Storm DP is leading the industry by introducing Rare earth alloy Tube Evaporator. This new feature will extend the life of the coils, provide protection in corrosive environments and maintain the coil's heat transfer ability over the life of the coil.

## SPECIFICATIONS

Power	110-120V/50Hz/4.3A / 220-240V/50Hz.2.5A
Size For	Up to 1,300 sq.ft
Filter	MERV - 8 Filter
Airflow	210 CFM, 350 CMH
Sound Pressure Level	< 58 dBA
Refrigerant	R290
Wheel	2 Wheels
Draining	Condensate Pump
Functioning Temperature Range	2~38 °C
Functioning Humidity Range	25~80%
Water Removal (Max)	50 L/Day @30 °C , 80%RH
Water Removal (AHAM)	25 L/Day @26.7 °C , 60%RH
Weight	32 KG
Dim (L×W×H)	380 × 372 × 587 mm
Loading quantity: 20"	40": 378 Sets; 40" HQ :540 Set

## KEY DESIGN FEATURES

- CE
- Smart Wi-Fi & APP control
- Optional, dual 230 / 110V voltage operation
- Easy clean – shell can be opened to access all components
- Easy to store wires and hoses
- Built-in Condensate Pump
- Environmental R290A Refrigerant
- Sturdy handle-Large Diameter Wheels
- Microchannel Cold a Heat Exchanger
- Rotational Molded Body
- Superior Stacking
- Rotary Compressor
- Ducting Options
- Water-Full Protection
- Automatic Humidistat Control
- Quick Connection to Cable/Hose
- Memory Starting
- MERV-8 Filter
- Low Temperature